

ALINCO

Quality. Style. Performance!

VHF/UHF DUALBAND DMR TRANSCEIVER

DJ-MD5(T / TGP) FC IC

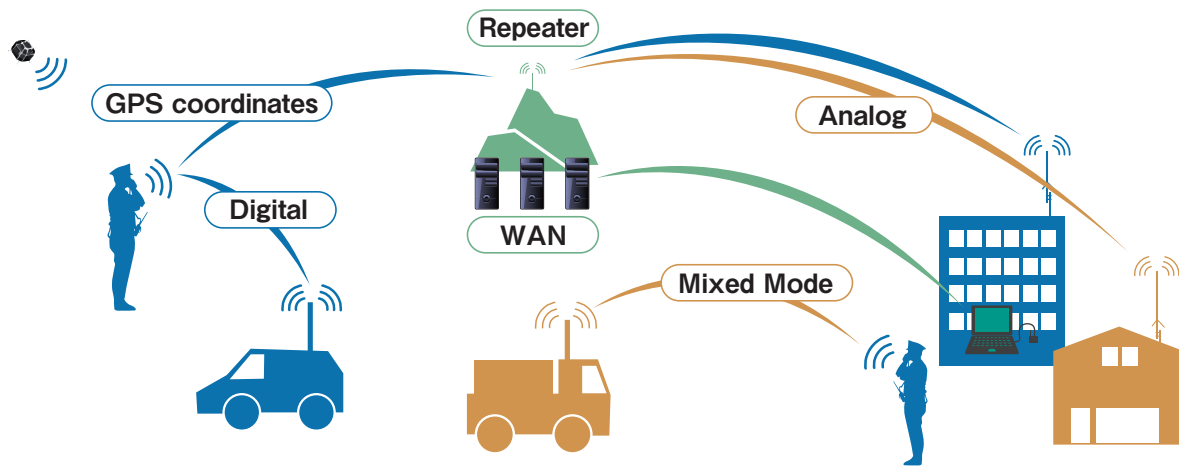
DJ-MD5(E / EGP) CE



An Exciting Compact 2-Slot, Dualband DMR Transceiver

- Built-in GPS Receiver (TGP,EGP models)
- DMR Tier I and Tier II
- RF output selectable from 5W, 2.5W, 1W and 0.2W
- Covers both VHF and UHF bands
- Super-compact body
- VFO programmable





Built-in GPS Receiver (TGP,EGP models)

Transmits and receives GPS coordinates automatically, and displays the distances between you and other users.

Clear Voice and Powerful Audio

Utilizes DVSI's AMBE+2® vocoder for Crystal clear DMR digital audio for use in noisy environments like construction sites and malls. Powerful 1W audio output to insure loud crisp sounds.

Large, Full-color Display

Features 1.77 inch display with a menu-driven interface, icons and large, easy-to-use keys for comfortable operations and message reading.

Real Two-slot DMR

The DMR Tier 2 two-slot TDMA technology doubles your communications capacity!

Mixed Mode Operation

Automatically detects and switches between analog and digital modes depending on the signal received.

Digital Voice Recorder

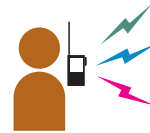
Up to 14 hours of recording communications and sounds/voice using an internal or optional microphone.



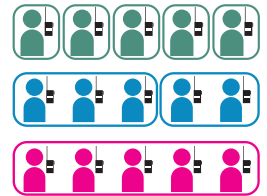


Large easy-to-read color LCD displays GPS coordinates and a distance between the communicating stations. (TGP, EGP models)

4,000ch, 250 zone, 10,000 TG, 250 Radio ID, 160,000 contact lists and VFO programming.



- GPS positioning
- Voice calls
- Text messaging



Individual, Group or All Calls

Safety and Security

Stay safe with Lone worker, Man down, Call alert and Emergency alarm with GPS positioning options. Security features such as Check, Remote monitor, Kill and Revive are all standard.

Plenty of Text Messages

100 preprogrammable short messages of up to 200 characters each, capable of editing through the keys without using a PC.

Other Versatile features

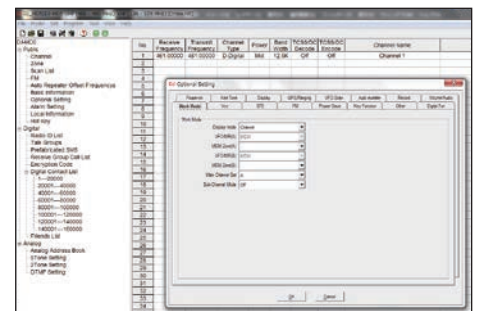
* Common to Digital and Analog modes

- Selectable output power 5W/2.5W/1W/0.2W
- 4000 channels, 250 zones, 250 scan lists
- Displays DMR ID, Call sign, Name and Geographical info.
- VOX built-in
- Allows CSV export/import of setting parameters
- Easy import of DMR contact database (entire world wide)
- Single or dual channel selectable
- FM Broadcasting receiver with 100 memory channels and VFO
- Manually programmable Side and Hot keys.
- Automatic date and time calibration by GPS (TGP,EGP models)



* Digital mode

- 10,000 Talk Groups, 250 Radio ID, 160,000 contact lists
- Displays the Caller ID and name
- 32 preset encryption codes
- Selective calls including Individual, Group or All
- Digital Monitor function to receive signals without matching ID or color codes.



* Analog mode

- Variety of signaling; CTCSS/DCS/DTMF/2-TONE/5-TONE encode and decode
- Four different Tone-burst tones
- Programmable Auto Repeater Shift (VFO)



Options



● Earphone Microphone
(EME-56A)



● Microphone
(EMS-76)



● Li-ion Battery
(EBP-87)
DC 7.4V 1500mAh

Specifications

General

Frequency Range	136-174MHz / 400-480MHz
Number of Channels	4000ch
Zones per Radio	250 zone (MAX 250ch/zone)
Channel Spacing	Analog : 12.5/25kHz Digital : 12.5kHz
Operating Voltage	7.4V DC nominal
Operating Temperature Range	-20°C to +55°C (-4 °F to +131 °F)
Frequency Stability	±2.5ppm
Antenna Impedance	50Ω
Dimensions (W x H x D Approx.) with battery pack / antenna length"	59x118x40 mm (2.32x4.65x1.57 inches)
Weight (Approx.)with EBP-96 Li-ion pack	256g /9.03 ounces

Transmitter

RF Power Output	5W / 2.5W / 1W / 0.2W
Spurious Emission	Less than 1GHz : -36dBm More than 1GHz : -30dBm
FM Hum & Noise (Analog)	25kHz : 40dB 12.5kHz : 36dB
Modulation	Analog : 16K0F3E / 11K0F3E Digital : 7K60FXD / 7K60FXE

Receiver

Sensitivity (Analog/12dB SINAD)	25kHz : 0.25uV 12.5kHz : 0.35uV
Sensitivity (Digital/BER)	5% : 0.3uV 1% : 0.7uV
FM Hum & Noise (Analog)	25kHz : 45dB 12.5kHz : 40dB
Audio Distortion	Less than 5%
Audio Output	1000mW / 16Ω



Standard Accessories

(A strap is included)

Li-ion Battery Pack	Li-ion Battery Charger	Antenna
EBP-88 (DC 7.4V 1700mAh)	EDC-189A	EA-228

AC Adaptor	Belt Clip	PC interface cable
EDC-191T (120V) or EDC-191E (220V)	EBC-34	ERW-21



Standard accessories declared herein are our factory default and may vary at moment of sales depending on the market and Dealers' sales policy.

Authorized Dealer:

ALINCO FRANCE
www.alinco.fr



Please be sure to read the instruction manual before using the product for your safety.



Copyright Alinco, Inc., Osaka, Japan. All rights reserved. Although Alinco has designed this brochure to be as accurate and comprehensive as possible, we reserve the right to make changes at any time to our equipment line, optional accessories, specifications, standard accessories, or availability of any such devices we manufacture and distribute. Please note that certain products and accessories may not be available in all countries of distribution therefore consult your Authorized Alinco Dealer for product availability and pricing. Colors of images herein may appear slightly different from actual products due to print.

* Projections are not included in the declared dimension values.

* Operator license may be required. Please consult your dealer for details.



ALINCO

INCORPORATED / Electronics Division

Yodoyabashi Dai-Bldg 13F, 4-4-9 Koraibashi,
Chuo-ku, Osaka 541-0043 Japan
Phone: +81-6-7636-2362 Fax: +86-6-6208-3802
<http://www.ALINCO.com>
E-mail: export@alinco.co.jp

FNFNELNI-PE
Ver.1.0 MD5
Printed in Japan